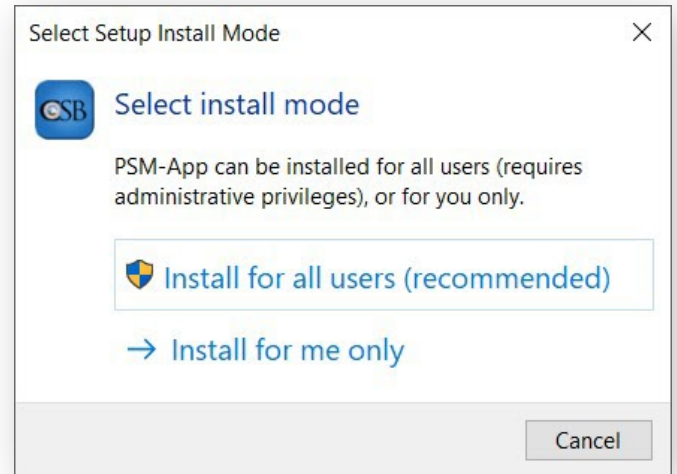


Process Safety Management (PSM) Application Installation Instructions - Windows Guide

The PSM Application is designed to install quickly and easily. This guide will hopefully answer any remaining questions you may have about the installation process.

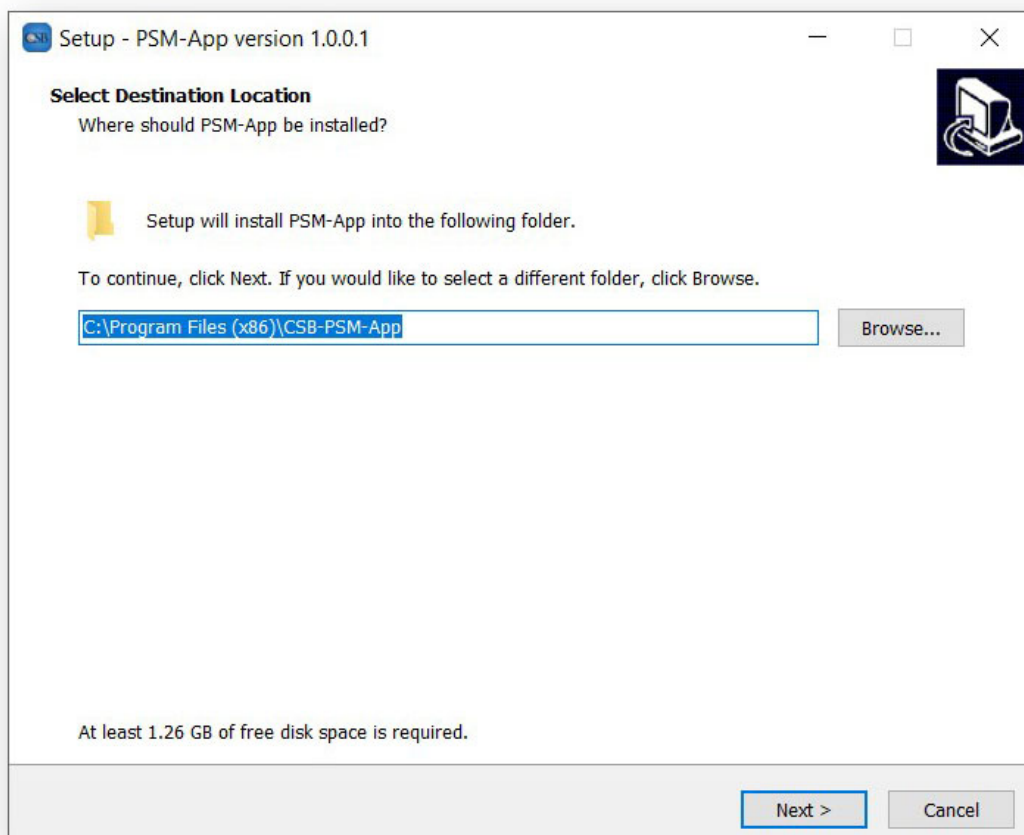
Step 1

After downloading the installation package, double-click the PSM-SetUp.exe file to launch the installation process. A prompt will appear, asking if you would like to install the application for all users on the computer, or only yourself. You may need Administrator privileges to install for all users. Choose the option best suited to your needs.



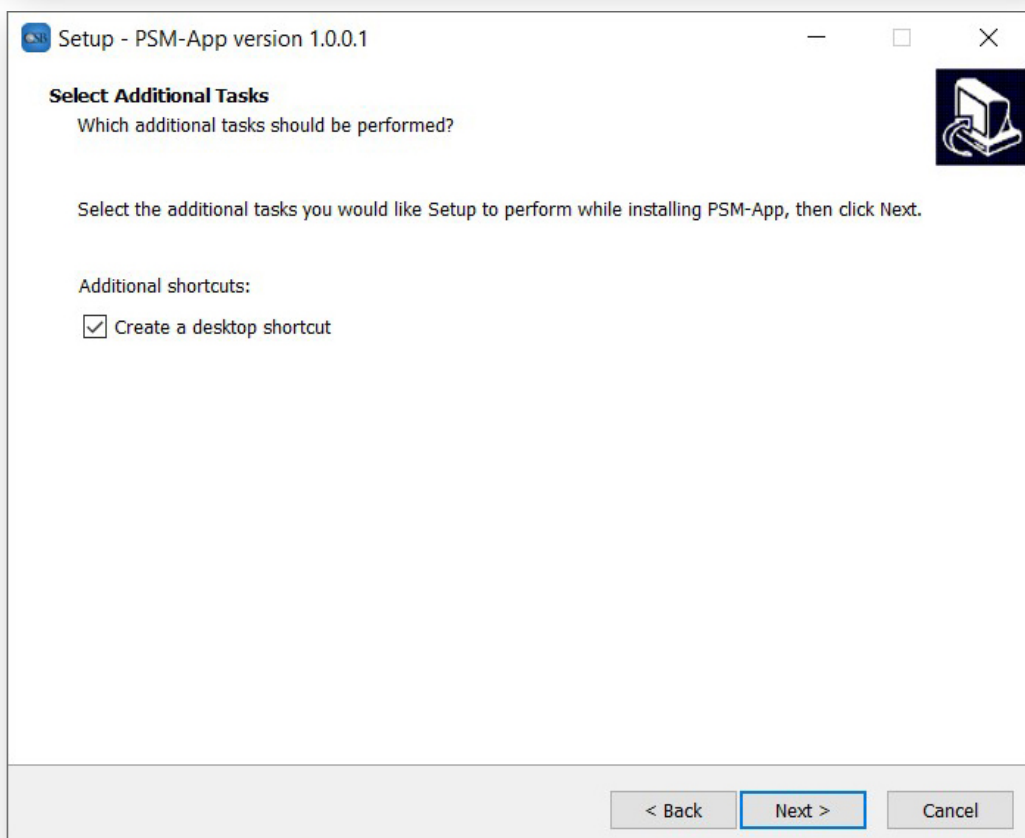
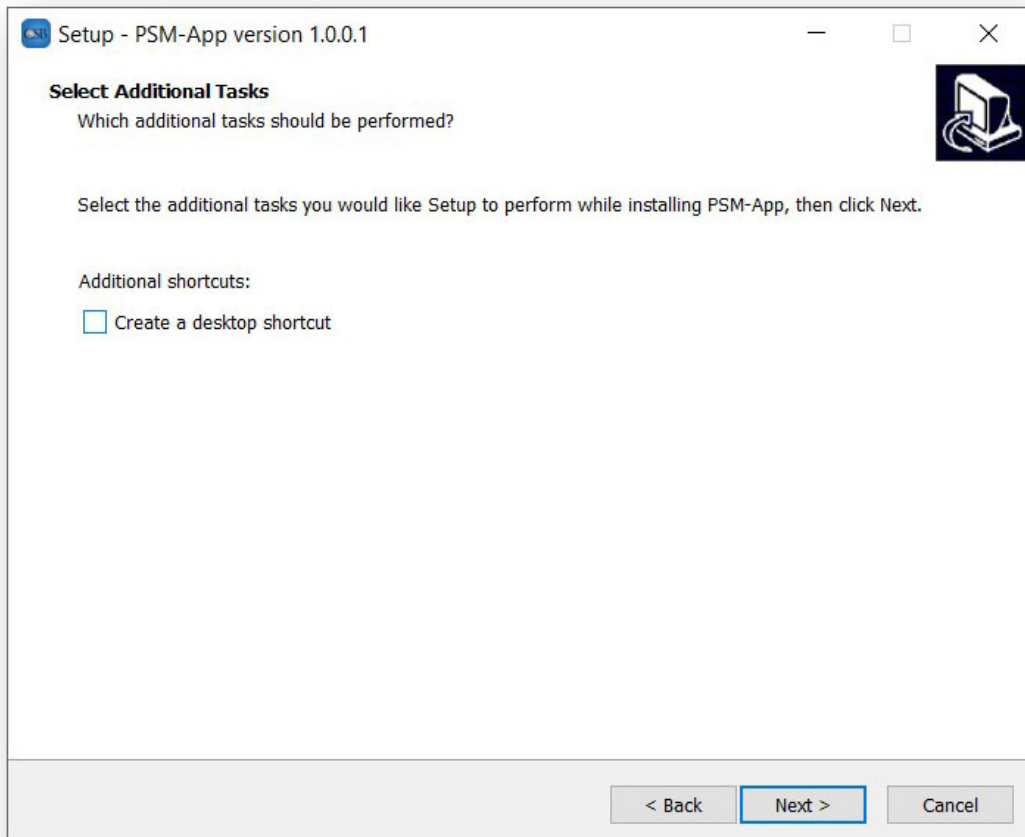
Step 2

Select where you would like the application to install. The default location should work for most users. This application requires at least 1.26 GB of free space to install.



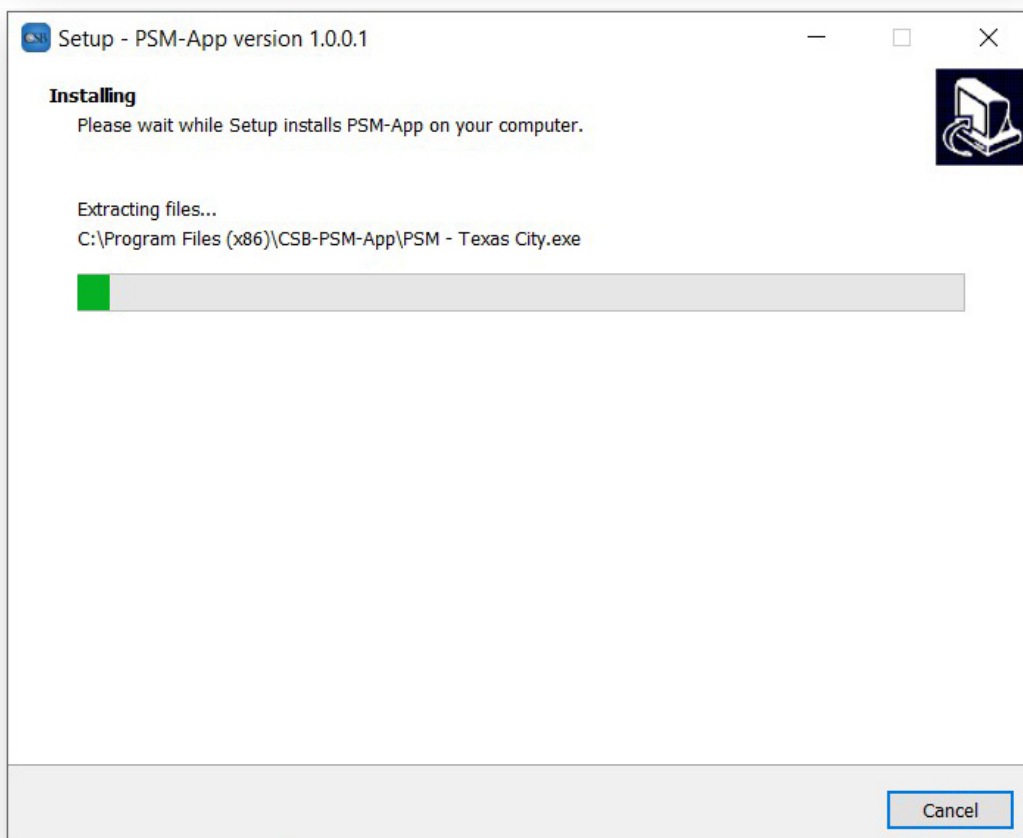
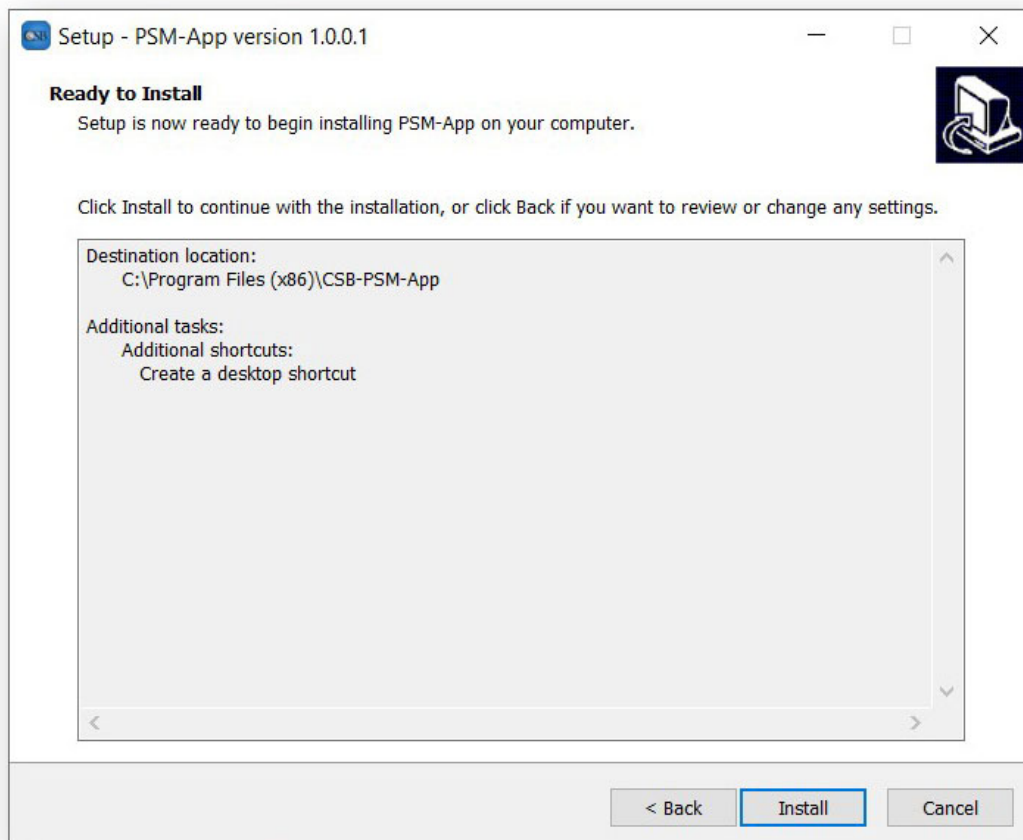
Step 3

You also have the option of creating a shortcut on your Desktop during the install process. The option is unchecked by default.



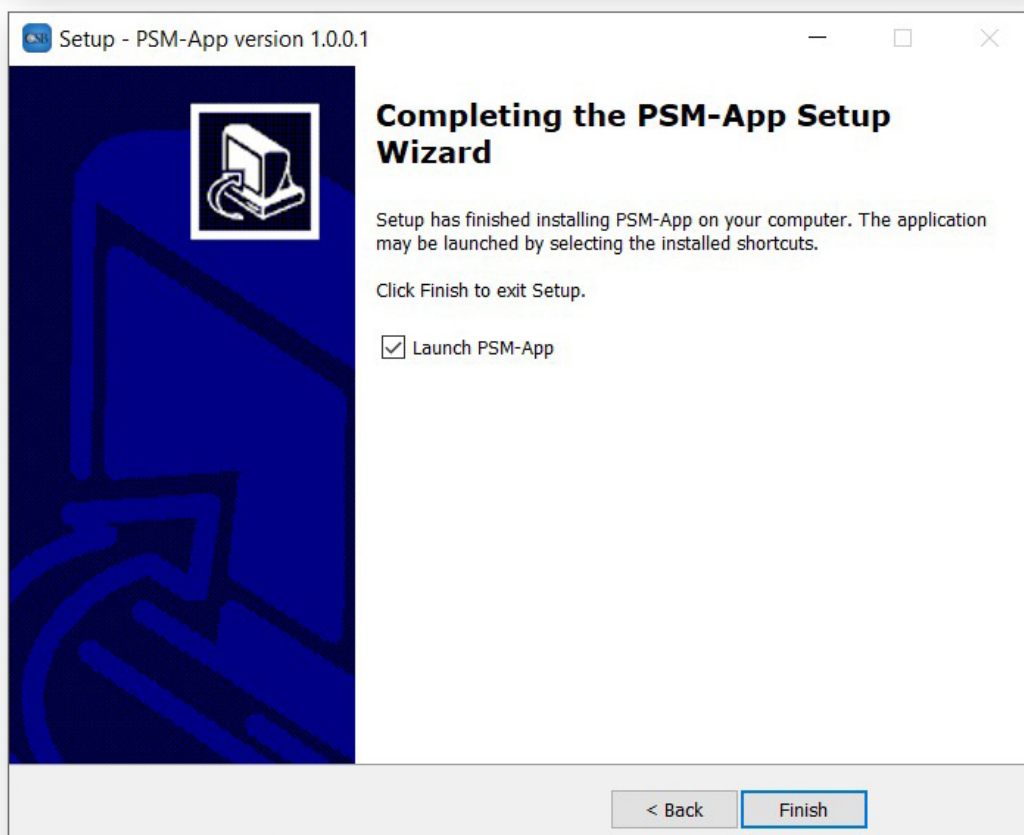
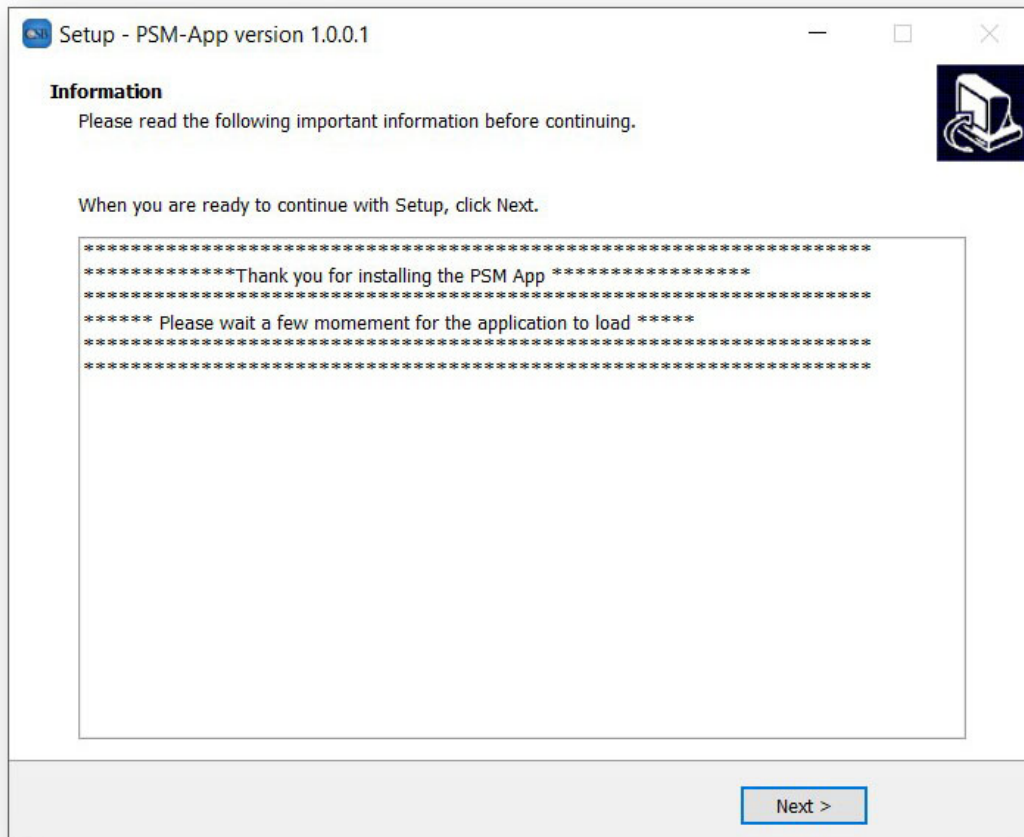
Step 4

The next screen summarizes your choices. If everything looks good, press “Install” to begin the installation.

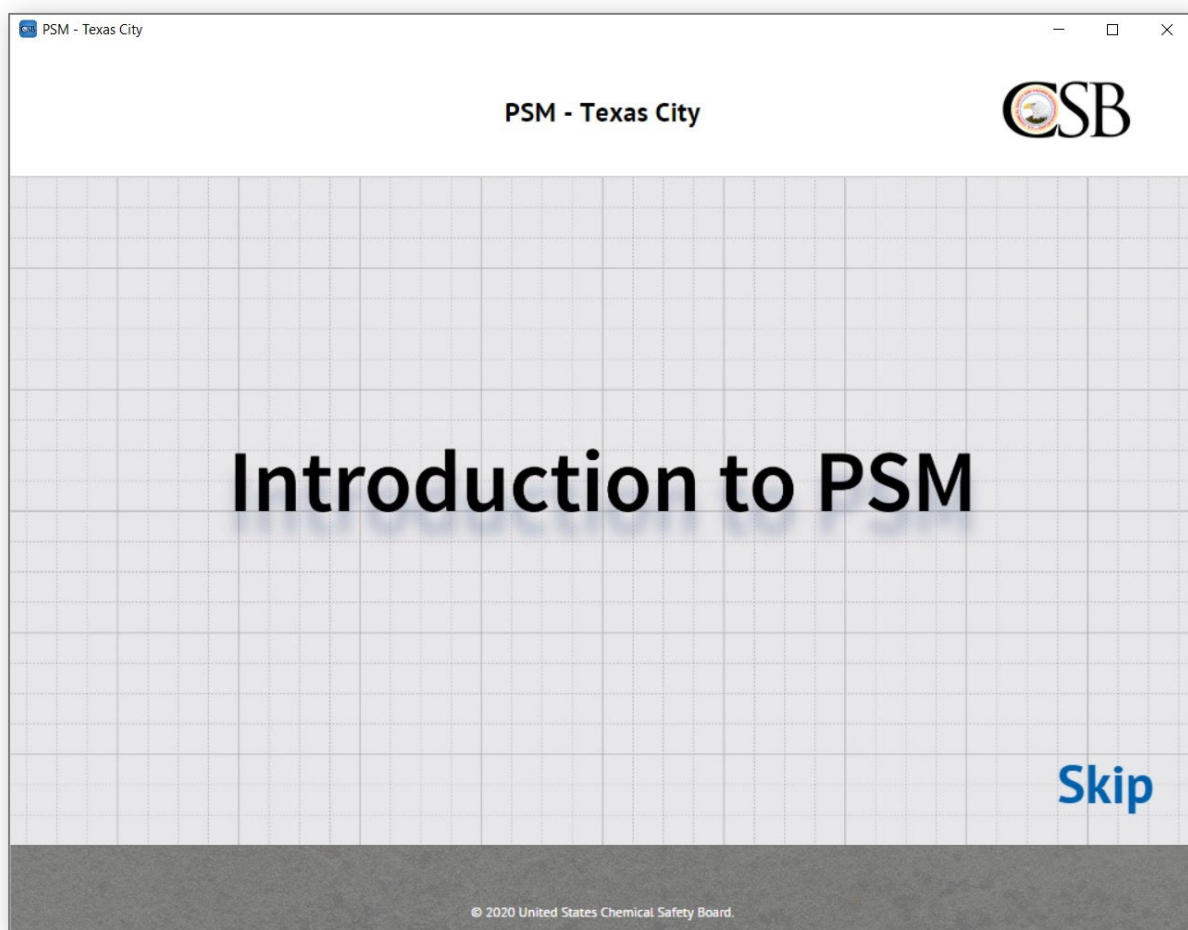


Step 5

After the installation process is complete, the installer reminds you that the load time for the application may be longer than expected. You can choose to launch the application immediately from the installer.



Enjoy the PSM application. Thank you!



Application Help Information

Once the Introduction video completes (or is Skipped), click and drag left or right to look around inside the application.

There are three ways you can navigate to a PSM element:

1. Click within the screen on a labeled PSM element hotspot.
2. Use the menu at the upper left to select a specific PSM element.
3. Use the arrows on the bottom bar to move to the previous or next PSM.

To read more about each PSM element, select individual key points from either the right hand sidebar OR one of the circular hotspots within the screen.

When available, click the play button from the right hand sidebar to watch a related video.

This information can be accessed again from within the PSM application, using the Help “?” menu.